



State of Srirangapatna 2012

We believe that any meaningful long-term vision for India would be incomplete without adequately planning for and sustainably financing the cities of tomorrow. In this context, our partnership with Srirangapatna is focused on answering critical questions about the long-term future development of the town.

The State of Srirangapatna Report maps the city's infrastructure - land use, slums, waste water, public toilets, garbage dumps, roads, drainage, street lights, electricity, finance, technology, transportation, shopping, work habits, drinking water, housing, solid waste - both at the city level and more granularly, at the ward level. The objective of this report is to throw light on the current state of infrastructure provision in the Srirangapatna TMC and to enable an objective comparison between the town's wards on the basis of quality and quantity of their infrastructure access. This document provides a brief overview of the report.

Areas of Strength

TRANSPORTATION

55%
of the city's population walks or cycles to their work location

26.7min
is the average time to work

71%
of the city lives within 10 meters of a streetlight

ACCESS TO DRINKING WATER

84%
of the city's population has access to a private water source

75%
of the city's households live within 50 meters of a drinking water tap or tank

ACCESS TO PRIVATE TOILETS

83%
of the city's households have access to a private toilet

TELECOMMUNICATIONS

88%
of the city's households have at least one mobile phone or landline

HOUSING

82%
of the city's households own their own homes

81%
of the city cooks with either gas (LPG) or kerosene

Areas of Opportunity

ACCESS TO PUBLIC TOILETS

3%
of the city's population lives within 50 meters of a public or community toilet

39%
of the households defecate in the open in wards with slums

50%
of households cited that lack of any available facility was the reason for defecating in the open

PURITY OF DRINKING WATER

59%
of the surveyed households report that purity of drinking water is their primary concern

2.3 hrs
is the average availability of drinking water daily

ACCESS TO FINANCIAL SERVICE

55%
of the households do not have access to any form of credit or debit

61%
of the households have no way of storing savings

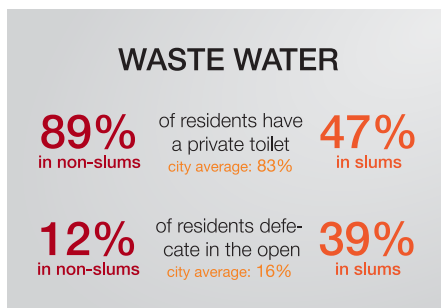
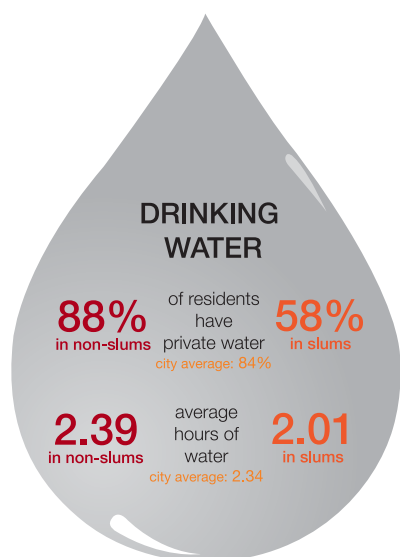
68%
of the city has no insurance coverage

ACCESS TO COMPUTERS

7%
of the city's households own a computer

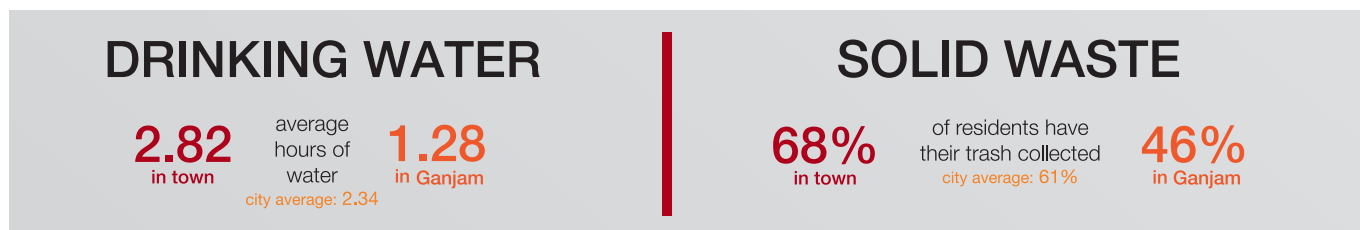
Slum and Non Slum Areas

Srirangapatna has nine slum areas spread across nine wards, housing approximately 21% of the city's population. There exists a big gulf between wards with slums and wards without. Wards with slums are worse-off in terms of infrastructure services across all domains (even in domains that the city is strong as a whole).



Srirangapatna Fort Town and Ganjam

The city of Srirangapatna is spread over 13 sq. km and is divided into two main areas: Srirangapatna Fort town and Ganjam. Approximately 64.4% of the city's population resides in Srirangapatna Fort town. The report finds that Srirangapatna Fort Town and Ganjam differ in certain key areas.



ACCESS TO INFRASTRUCTURE INDEX

The "Access to Infrastructure" index is a 10 point index constructed for the purpose of comparing wards in Srirangapatna TMC across all sectors. The index is composed of twelve household-level metrics. Each metric constituting the index is normalized on a 0 to 10 scale (0 being the worst and 10 being the best) and this is used to compute an equally-weighted average, which is the composite "Access to Infrastructure" score for a ward. This analysis is a relative comparison between the wards and the best performing ward in a sector gets a score of 10, while the other wards are rated in comparison to the best performer.

The city on average has a score of 6.48/10. Four of the bottom five ranked wards are wards with slums while only one ward with a slum is present in the top 10 wards. The adjoining table lists the top 10 wards.

Rank	Score	Ward
1	8.50	Ward 6
2	8.20	Ward 8
3	8.12	Ward 13
4	8.08	Ward 9
5	7.67	Ward 12
6	7.53	Ward 7
7	7.20	Ward 4
8	6.63	Ward 19
9	6.55	Ward 17
10	6.53	Ward 20*

* Ward contains a slum